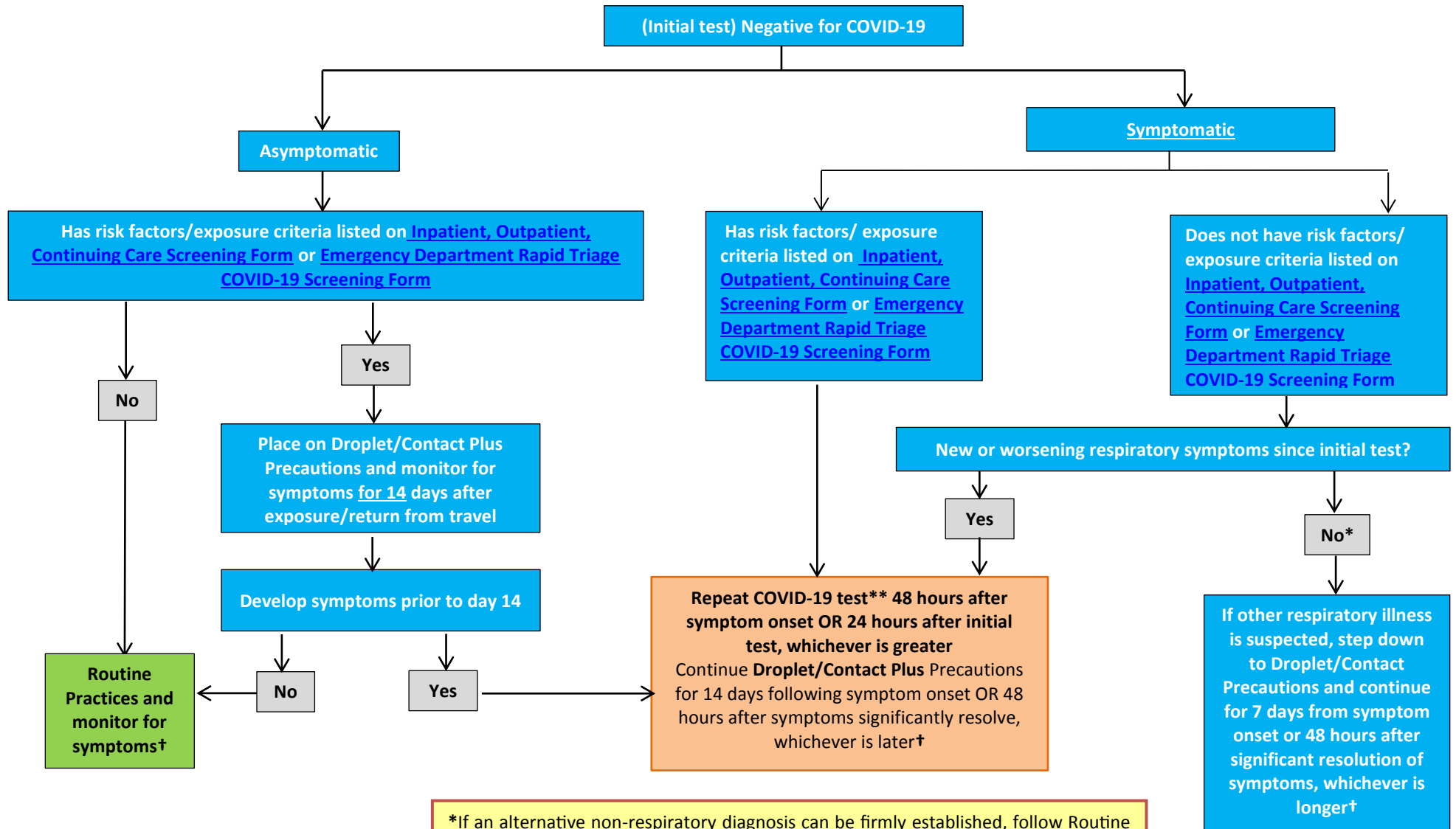




Modification of Precautions for COVID-19 Negative Inpatients and Residents

NOTE: This algorithm does not apply to new admissions or returns to Long Term Care Homes (Refer to [CV-19 G0044 Recommendations for COVID-19 Testing – Long Term Care and Personal Care Homes](#))



*If an alternative non-respiratory diagnosis can be firmly established, follow Routine Practices
 ** Retesting is done only for epidemiological reasons
 †Removal/step down of precautions should be made in consultation with the most responsible physician (MRP)