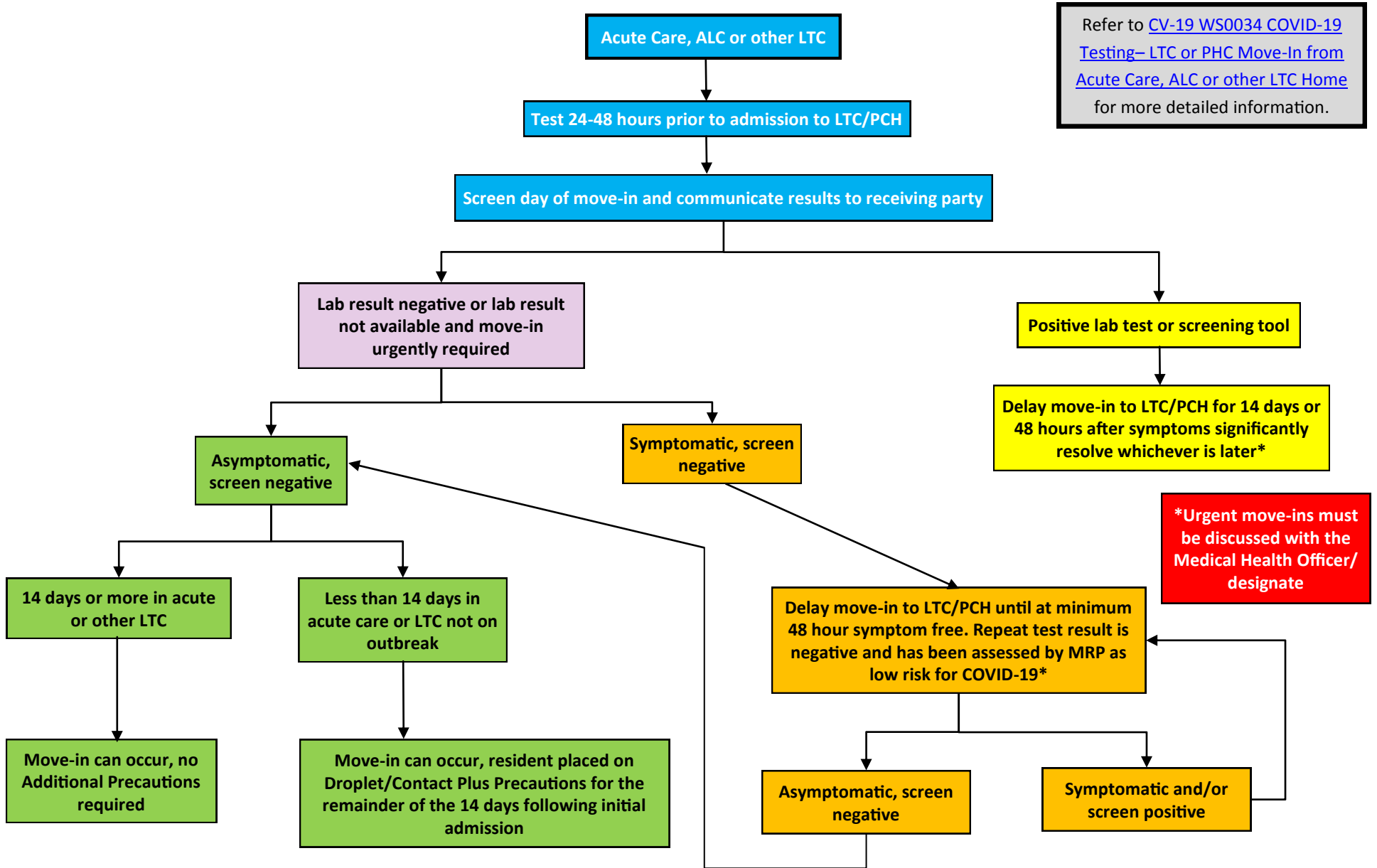




Long Term Care (LTC)/Personal Care Home (PCH) Move-In From Acute Care, Alternate Level of Care (ALC) or Other LTC



Refer to [CV-19 WS0034 COVID-19 Testing– LTC or PHC Move-In from Acute Care, ALC or other LTC Home](#) for more detailed information.

***Urgent move-ins must be discussed with the Medical Health Officer/designate**