

Alternate Specimen Collection & Laboratory Testing for COVID-19

FOLLOW THE MOST UP TO DATE GUIDANCE FOR TESTING INDICATIONS AT

saskatchewan.ca/COVID19

During limited supply of Nasopharyngeal swabs, the following alternate instructions may be used for the collection of **Throat & Nares** specimens using the Aptima® Multitest or Unisex Swab Specimen Collection Kit

What you will need:

- ◆ Hologic Aptima® Multitest or Unisex Swab Specimen Collection Kit
- ◆ COVID-19 Pandemic Requisition
- ◆ Personal Protective Equipment (PPE) for droplet and contact precautions (i.e. gloves, gown, surgical mask, eye protection)

IMPORTANT: DO NOT USE these swabs for nasopharyngeal collection

How to Collect a Throat & Nares Specimen:

See instruction video courtesy of Provincial Public Health Laboratory Network Nova Scotia:

<https://vimeo.com/397169241>

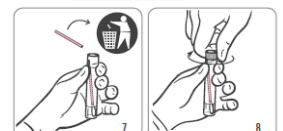
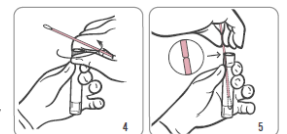
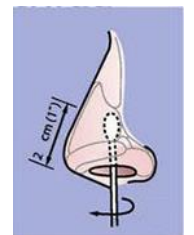
Step 1: Partially open the swab package and remove the swab. Do not touch the soft tip or lay the swab down. Have the patient tilt their head backwards, open their mouth, and stick out their tongue. Use a tongue depressor to hold the tongue in place.

Step 2: Hold the swab, placing the thumb and forefinger in the middle of the shaft covering the back score line. Do not hold the shaft below the score line. Without touching the sides of the mouth, swab the posterior nasopharynx and the tonsillar arches

Step 3: Using the same swab ask the patient to tilt their head back. Insert the swab approximately 1-2 cm into each nostril. Rotate the swab inside the nostril for 3 seconds, covering all surfaces.

Step 4: Immediately place the swab into the transport tube so the black score lines up with the top edge of the tube and carefully break the shaft. The swab will drop to the bottom of the vial. **DO NOT FORCE THE SWAB THROUGH AND DO NOT PUNCTURE THE FOIL CAP.**

Step 5: Discard the top portion of the shaft. Tightly screw the cap onto the tube



Be sure to label all specimens with the patients' Name (First and Last), DOB and Health Services Number (HSN) to ensure electronic patient record alignment of test results

Laboratory Controlled Document: PROV-22 v3

