

COVID-19



SD Biosensor Rapid Antigen Test

Your testing kit contains:

1. silica gel pack
(do not use test if beads are green)
2. nose swab
3. tube
4. dropper lid
5. test unit

You will need:

- ✓ clean, level surface
- ✓ paper towel
- ✓ hand sanitizer
- ✓ timer or clock



Adapted from SD Biosensor product insert – Updated Jan. 19, 2022

Do not eat or drink for at least 30 minutes before taking the test.

Before you start:

- ✓ Clean your hands.
- ✓ Place paper towel on a clean, level surface.
- ✓ Open the contents of your testing kit.
- ✓ Place tube in stand so that it is upright.
- ✓ Write your name with marker or pencil on the unit if testing more than one person.

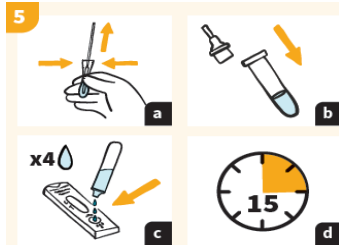
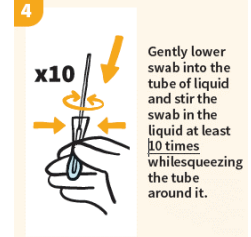
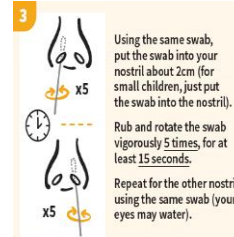
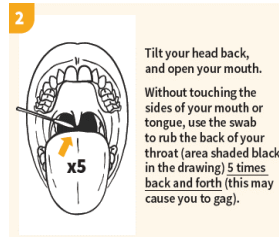
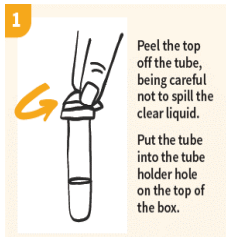


Scan this QR code for an instructional video: testtoprotect.ca/biosensor

Note:

For better accuracy of the test, we recommend swabbing both the throat and nostril using the same swab. If you choose to only swab one spot, it must be your nostril (throat swab alone will not give accurate results).

Follow the instructions carefully for accurate results.



Squeeze the liquid out of the swab by pinching the tube and slowly pulling the swab out (a). Throw out the swab.

Put the dropper lid on the top of the tube (b) and turn it upside down to gently squeeze 4 drops of liquid into the small round well of the test unit (c). **CAUTION**, the drops come out quickly.

Leave the test unit on a level, flat surface for **15 minutes** (d).



The area that displays the results will turn pink before turning back to white when it is time to read the results.

Results (after 15 – 30 minutes)

Negative: one line at the C (control) mark, no line at the T (test) mark



Positive: two lines. One line at the C (control) mark, one line at the T (test) mark



Please note:

- A single negative result cannot be used to rule out COVID-19.
- Stay at home if you have symptoms and repeat the test in 48 hours.

You must:

- Isolate immediately.
- Follow direction set forth by the [Government of Saskatchewan](https://www.saskatchewan.ca/government/health-and-social-services/covid-19).
- Inform all close contacts.

INVALID TEST – If your test **DOES NOT MATCH** either the negative or positive examples. Repeat test.