

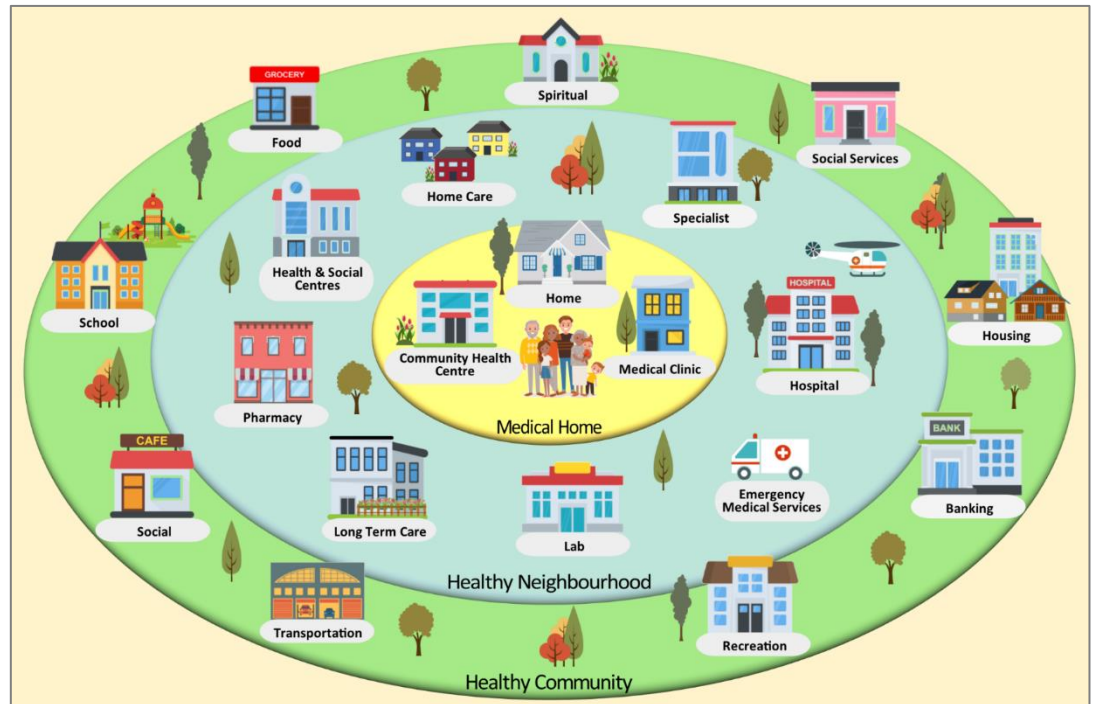
Health Networks are being developed in Saskatchewan to help our **patients get the right care at the right time from the right health care provider, as close to home as possible.**

Health Networks are **collaborative teams of health professionals**, including physicians, and community partners, providing fully integrated services to meet the health needs of individuals and communities.

Health Networks exist within a small, defined geography. They aim to deliver healthcare services closest to where the patient lives and works.

The **focus is on the needs of individuals and communities** to bring patients the health care services they need, where they need them.

By integrating team-based community and primary health care throughout Saskatchewan, Health Networks will work to reduce the likelihood of citizens needing acute care, and strengthen the transition back to primary or home care from the hospital by **embracing a team approach.**



Adapted from Alberta Health Services, Primary Health Care

There are different aspects of care, and the networks link these different services within a community or geography, ensuring that communities have **consistent access to the care and services** they require through an inter-disciplinary team including physicians and other providers such as pharmacists, nurse practitioners, physiotherapists, dietitians, mental health counsellors, social workers, and more. This will help ensure the networks are **reflective of the communities they serve.**

Networks will help citizens to receive consistent care closer to home, and will also improve supports offered to physicians and patient care providers. The creation of networks will allow the SHA to better allocate staff and resources to **meet the particular needs of the citizens** living within that network.

